



Jack Wechat



Jack Facebook



## Computerized Lockstitch Machine With Electronic Control Stitch Length System



A4E

2020.5

**JACK SEWING MACHINE CO.,LTD.**

No.1008,DonghaiAvenueEast,jiaojiangDistrict,TaizhouCity,Zhejiang

TEL: 0086-576-88177782 88177767

FAX: 0086-576-88177787

E-mail: sales@chinajack.com

www.chinajack.com

# A4E

Item: Computerized Lockstitch Machine With Electronic Control Stitch Length System  
 Feature: precise stitch, silent, reverse sewing, various stitch



1 one key to reset

2 half stitch

3 reverse sewing function

4 needle gauge adjustment button

5 big fan hand wheel

6 products introductions' QR code

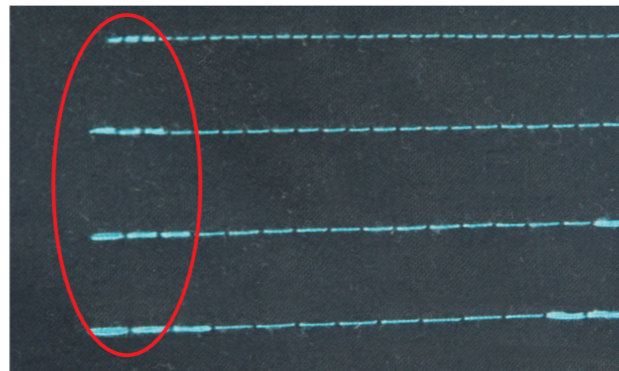
7 USB port

Germany design, Unique image, precise details



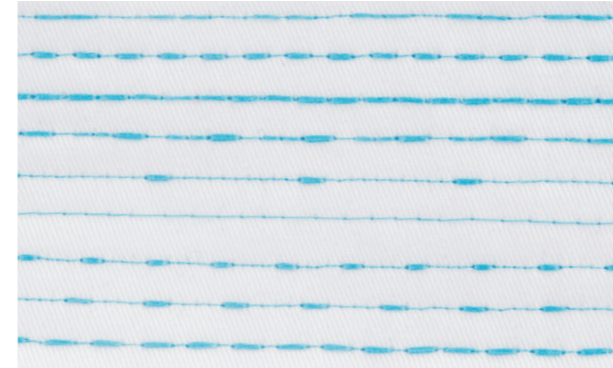
## 1 High precision stitch

stitch length can reach 0.1mm controlled by stepping motor. Stitch length adjustment function can be locked just in case operator's mis-operation.



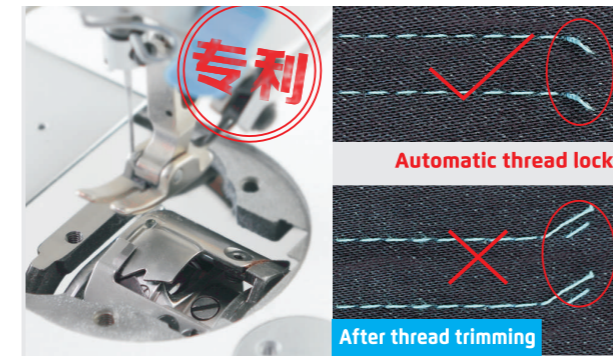
## 2 High stitch overlapping ratio

Overlapping stitch can be perfectly realise in any stitch length, front and back thread remaining lock function is available.



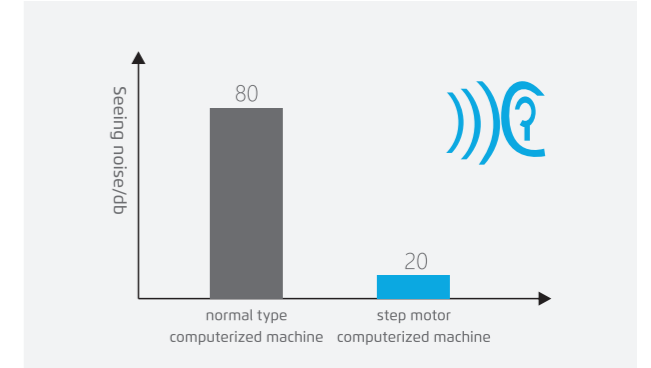
## 3 variable stitches, fashionable and beautiful

Different sewing stitch is available based on different clothes requirements. And editable pattern enables more fashionable and beautiful stitches.



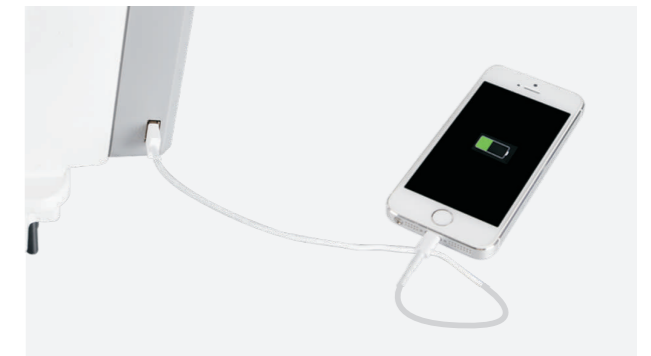
## 5 Short thread remaining, no need to trim again

No need to trim thread remaining again, which avoids trimming risks and save labour, time and money.



## 4 Noiseless reverse sewing, quiet and comfortable

Stepping motor controlled reverse sewing structure by scientific design achieves noiseless reverse sewing, which enables a quiet and comfortable environment.



## 6 Super USB port

Innovated USB port can not only charge phone, but also run fan and upgrade software.

## Specification

Model	Needle	Thread Number	Max Stitch Length (mm)	Presser Foot Lifter Height (mm)	Max Speed (s.p.m)	Thin / medium thick	Thick material	Volume (mm)	Weight (kg)
A4E	DB×1 11-18#	2	5	5-13	5500	√	/	695×295×550	41/47
A4E-H-M	DB×1 11-18#	2	5	5-13	5500	√	/	695×295×550	41/47
A4E-H	DP×5 18-21#	2	5	5-13	3500	√	√	695×295×550	41/47
A4E-CP	DB×1 11-18#	2	5	5-13	5500	√	/	695×295×550	41/47

NOTE: Stand configuration is powermax control box, and Q(Qixing) control box is also available. Japanese hook, auto trimmer, auto reverse sewing, auto presser foot lifter, electronic tension post, 5mm stitch length, 7mm stitch length is optional, P means multiples of 1.6 hook